



MARINELLA

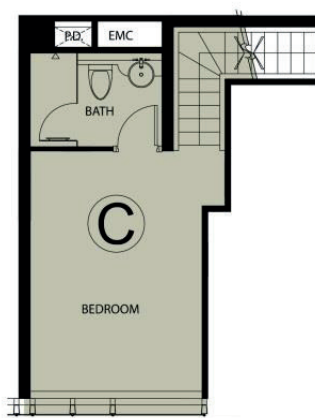
深灣 9 號



- Tranquil location with full seaview
- Aside of Aberdeen Marina Club
- International schools nearby and is immediate close to Singapore International School, Canadian International School, Victoria Shanghai Academy
- 5-minute to Wong Chuk Hang MTR Station and easy access by mini-buses and buses
- Full Clubhouse Facilities - Club Marinella

Floor Plan

Duplex Unit C, 18/F, Tower 2, Marinella (2-Bed)

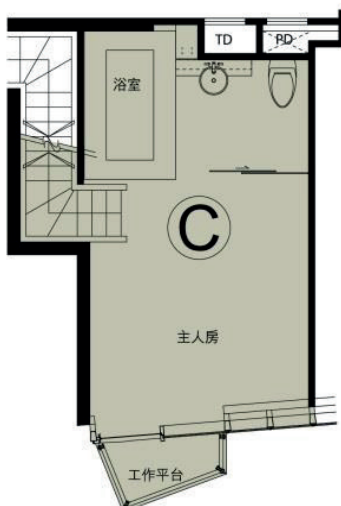


Upper Part of the unit

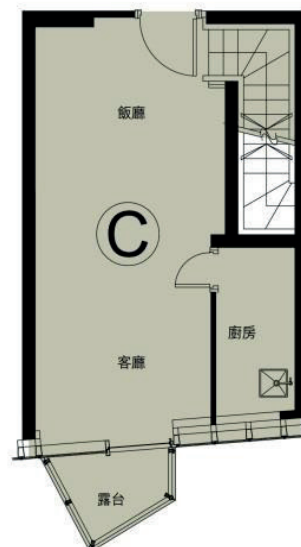


Lower Part of the unit

Duplex Unit C, 28/F, Tower 9, Marinella (1-Bed)



Upper Part of the unit



Lower Part of the unit

Location Plan



KW 嘉華地產(集團)有限公司
K. WAH PROPERTIES (HOLDINGS) LTD.

KW 嘉華地產有限公司
K. WAH REAL ESTATES CO., LTD.

Leasing Hotline
租務專線

2880 1857

The images, drawings or sketches shown in this brochure/promotional material represent an artist's impression of the development concerned only. They are not drawn to scale and/or may have been edited and processed with computerized imaging techniques. Images, drawings and sketches in this brochure/promotional material regarding the environment, views, and interior designs of the development concerned do not represent the actual environment, views and final interior designs. This brochure/promotional material is for general purpose only and nothing in this brochure/promotional material contains professional advice or any binding commitment upon the developer in relation to the availability of property, facilities or description of the development. This brochure/promotional material does not constitute and shall not be construed as giving any offer, representation or warranty whether expressed or implied. The developer also advises relevant persons to conduct an on-site visit for a better understanding of the development site, its surrounding environment and the public facilities nearby.

本小冊子/宣傳資料內載列的圖像、繪圖或素描顯示純屬畫家對有關發展項目之想像。有關圖像、繪圖或素描並非按照比例繪畫及/或可能經過電腦修飾處理。本小冊子/宣傳資料內載列有關周邊地區的環境、景觀、及項目之內部設計的圖像、繪圖或素描顯示並不反映有關發展項目實際的環境、景觀及最終落成之內部設計。本小冊子/宣傳資料僅供一般資料用途，不構成任何專業意見，或發展商對物業或設施的可得性或發展項目的描述的任何約束性承諾。本小冊子/宣傳資料並不構成亦不得詮釋成作出任何不論明示或隱含之要約、陳述或保證。發展商亦建議有關人士到發展地盤作實地考察，以對該發展地盤、其周邊地區環境及附近的公共設施有較佳了解。