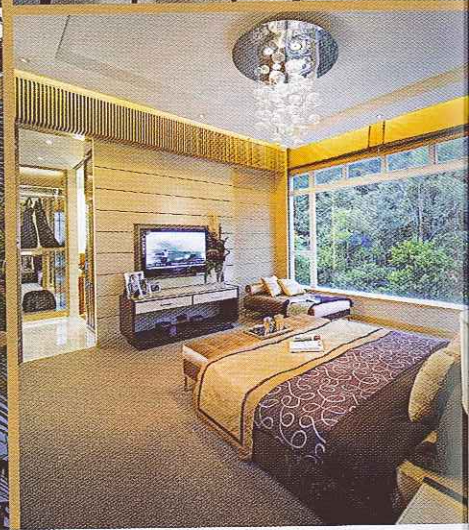
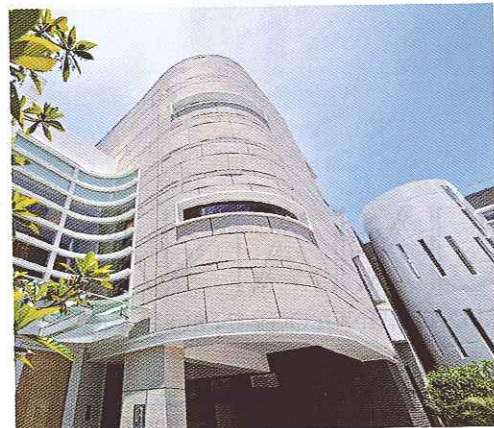


THE GREAT HILL K.WAH INTERNATIONAL



# Artistic quintessence of life



**T**he Great Hill by K. Wah International is undoubtedly the most attention-winning new residential project in Shatin. Its luxury designs and functional amenities are setting new benchmarks for luxury properties in the New Territories.

Brilliant ideas for The Great Hill, a brainchild of K. Wah International, mainly come from the high-end lifestyle in New York's Upper East Side and unique Art Deco-style designs.

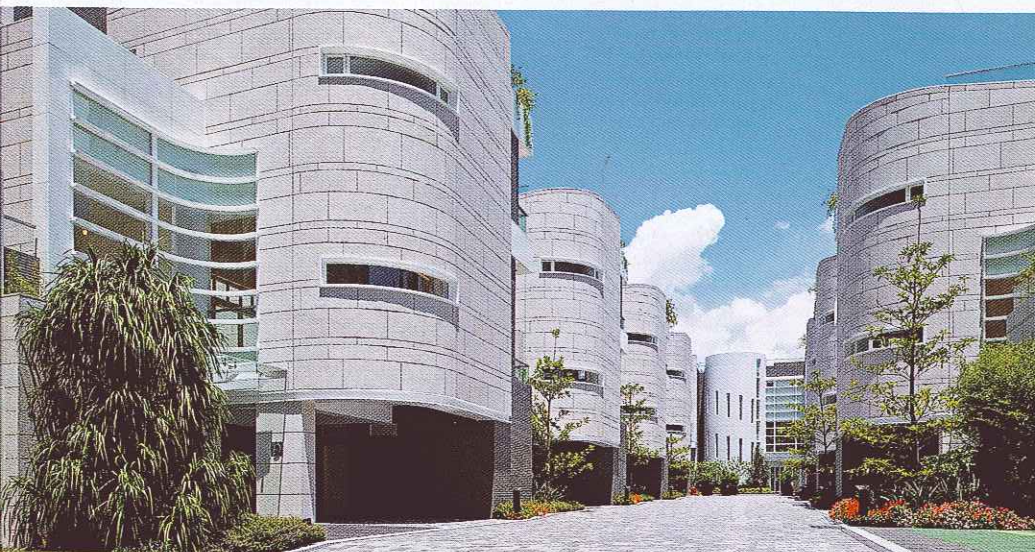
The two-storey houses measure a gross area of 4,380 sq ft, and comes with four bedrooms, two of which are suites, located in a pleasant

environment surrounded by mountains with convenient access to a bustling city.

Colourful rhododendron is planted in front of every house. Rhododendron's unique formation, coupled with the 30-foot-wide footpath that leads to the house, creating a classy ambience. The ground floor of the houses comprises an atrium, a small garden and a covered car park. In fact, the garage and open space in front of the house are spacious enough for three cars.

The house is built around a central garden. The full-length glass curtain sliding doors provide the living and dining rooms with ample warm

THE GREAT HILL (L) AND (R) ARE THE GREAT HILL BY K. WAH INTERNATIONAL. THE GREAT HILL BY K. WAH INTERNATIONAL IS A REGISTERED TRADEMARK OF K. WAH INTERNATIONAL.



No one will deny that The Great Hill, of K. Wah International, is one of the most attractive residential projects in Shatin district. Its luxury design and top-class amenities have set new standards for luxury properties in the New Territories.

sunlight to seamlessly blend the exterior with the interior spaces. Layout of the ground floor mainly consists of a dining room, sitting room and kitchen. The 280 sq ft dining room boasts glass sliding doors on one side, thus inviting the serene garden ambience into the interior. The sitting room offers a generous 500 sq ft area, which is large enough to accommodate two sets of seating. Headroom of the sitting room is particularly high at 15' – an exact match of Severn 8 on the Peak.

The kitchen is located on one side of the dining room. Measuring 200 sq ft, it is roomy enough for sophisticated kitchen systems. Sleek stainless steel Gaggenau appliances and Poggenpohl cabinets line both sides of the kitchen as a Sub Zero refrigerator highlights the expensive installations, which cost more than HK\$1 million in total. On the first floor are three guest bedrooms, one master's room and three bathrooms respectively. The master's suite measures 500 sq ft and 11.5' high. It is also equipped with board glass curtains to allow for ambience light and verdant sights.

By the 300 sq ft central garden there is a swimming pool measuring about 33'x11'. The rooftop features a 1300 sq ft sky garden, a design as such is indeed hard to come by in houses across Hong Kong.

Quality living comes not solely with architectural superiority, but the art of appreciating life. To this end, an elegant clubhouse is also ready for tenants to make this happen.

